

## One-Sample T-Test Report

Page/Date/Tin 1  
 Database C:\PROGRAM FILES\NCSS97\DATA\SAMPLE.S0  
 Variable Weight

### Descriptive Statistics Section

Variable	Count	Mean	Standard Deviation	Standard Error	95% LCL of Mean	95% UCL of Mean
Weight	20	139.6	43.1221	9.642395	119.4182	159.7818

T for Confidence Limits = 2.0930

### Tests of Assumptions Section

Assumption	Value	Probability	Decision(5%)
Skewness Normality	1.0233	0.30614	Cannot reject normality
Kurtosis Normality	-0.9607	0.33669	Cannot reject normality
Omnibus Normality	1.9702	0.37340	Cannot reject normality
Correlation Coefficient			

### T-Test For Difference Between Mean and Value Section

Alternative Hypothesis	T-Value	Prob Level	Decision (5%)	Power (Alpha=.05)	Power (Alpha=.01)
Weight<>0	14.4777	0.00000	Reject H	1.00000	1.00000
Weight<0	14.4777	1.00000	Accept H	0.00000	0.00000
Weight>0	14.4777	0.00000	Reject H	1.00000	1.00000

### Nonparametric Tests Section

#### Quantile (Sign) Test

Hypothesized Value	Quantile	Number Lower	Number Higher	Prob Lower	Prob Higher	Prob Both
0	0.5	0	20	0.00000	1.00000	0.00000

#### Wilcoxon Signed-Rank Test for Difference in Medians

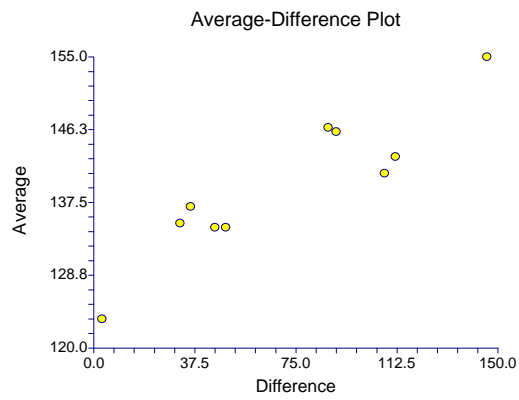
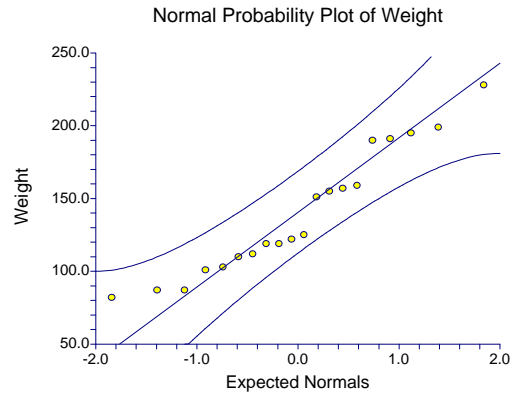
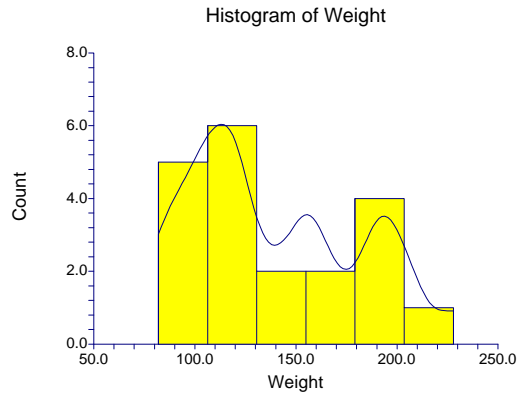
W Sum Ranks	Mean of W	Std Dev of W	Number of Zeros	Number of Ties	Multiplicity Factor
210	105	26.7815	0	2	12

Alternative Hypothesis	Exact Probability		Approximation Without Continuity Correction			Approximation With Continuity Correction		
	Prob Level	Decision (5%)	Z-Val	Prob Level	Decision (5%)	Z-Val	Prob Level	Decision (5%)
Median<>0			3.920	0.000	Reject	3.901	0.000	Reject Ho
Median<0			3.920	0.999	Accept	3.939	0.999	Accept Ho
Median>0			3.920	0.000	Reject	3.901	0.000	Reject Ho

# One-Sample T-Test Report

Page/Date/Tin 2  
Database C:\PROGRAM FILES\NCSS97\DATA\SAMPLE.S0  
Variable Weight

## Plots Section



## One-Sample T-Test Report

Page/Date/Tin 1  
 Database C:\PROGRAM FILES\NCSS97\DATA\SAMPLE.S0  
 Variable Weight

### Descriptive Statistics Section

Variable	Count	Mean	Standard Deviation	Standard Error	95% LCL of Mean	95% UCL of Mean
Weight	20	139.6	43.1221	9.642395	119.4182	159.7818

T for Confidence Limits = 2.0930

### Tests of Assumptions Section

Assumption	Value	Probability	Decision(5%)
Skewness Normality	1.0233	0.30614	Cannot reject normality
Kurtosis Normality	-0.9607	0.33669	Cannot reject normality
Omnibus Normality	1.9702	0.37340	Cannot reject normality
Correlation Coefficient			

### T-Test For Difference Between Mean and Value Section

Alternative Hypothesis	T-Value	Prob Level	Decision (5%)	Power (Alpha=.05)	Power (Alpha=.01)
Weight<>150	-1.0786	0.29428	Accept H <sub>0</sub>	0.17624	0.056340
Weight<150	-1.0786	0.14714	Accept H <sub>0</sub>	0.27272	0.092995
Weight>150	-1.0786	0.85285	Accept H <sub>0</sub>	0.00361	0.000429

### Nonparametric Tests Section

#### Quantile (Sign) Test

Hypothesized Value	Quantile	Number Lower	Number Higher	Prob Lower	Prob Higher	Prob Both
150	0.5	11	9	0.74827	0.41190	0.823803

#### Wilcoxon Signed-Rank Test for Difference in Medians

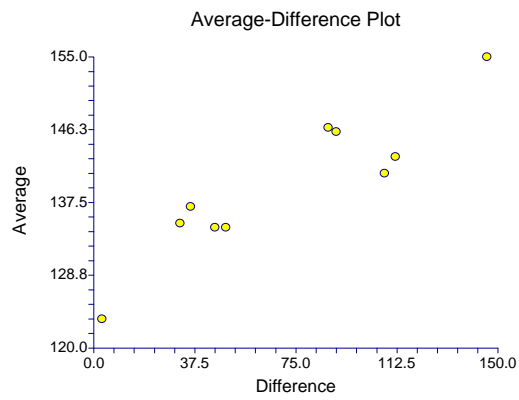
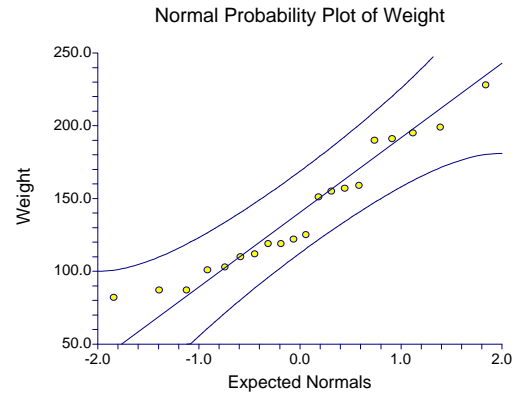
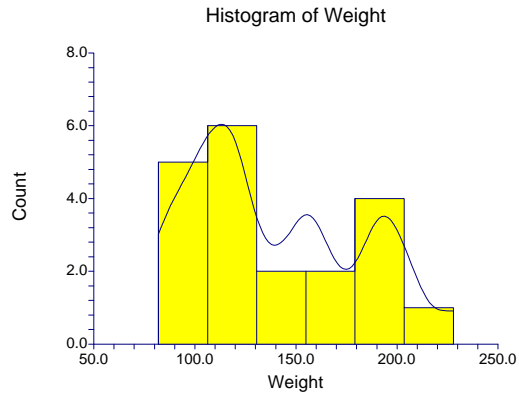
W Sum Ranks	Mean of W	Std Dev of W	Number of Zeros	Number of Ties	Multiplicity Factor
81	105	26.7768	0	4	24

Alternative Hypothesis	Exact Probability		Approximation Without Continuity Correction		Approximation With Continuity Correction		Decision (5%)	
	Prob Level	Decision (5%)	Z-Val	Prob Level	Decision (5%)	Z-Val		Prob Level
Median<>150			0.896	0.370	Accept	0.877	0.380	Accept Ho
Median<150			-0.896	0.185	Accept	-0.877	0.190	Accept Ho
Median>150			-0.896	0.814	Accept	-0.915	0.819	Accept Ho

# One-Sample T-Test Report

Page/Date/Tin 2  
Database C:\PROGRAM FILES\NCSS97\DATA\SAMPLE.S0  
Variable Weight

## Plots Section



## One-Sample T-Test Report

Page/Date/Tin 1  
 Database C:\PROGRAM FILES\NCSS97\DATA\SAMPLE.S0  
 Variable wtmin150

### Descriptive Statistics Section

Variable	Count	Mean	Standard Deviation	Standard Error	95% LCL of Mean	95% UCL of Mean
wtmin150	20	-10.4	43.1221	9.642395	-30.58177	9.781766

T for Confidence Limits = 2.0930

### Tests of Assumptions Section

Assumption	Value	Probability	Decision(5%)
Skewness Normality	1.0233	0.30614	Cannot reject normality
Kurtosis Normality	-0.9607	0.33669	Cannot reject normality
Omnibus Normality	1.9702	0.37340	Cannot reject normality
Correlation Coefficient			

### T-Test For Difference Between Mean and Value Section

Alternative Hypothesis	T-Value	Prob Level	Decision (5%)	Power (Alpha=.05)	Power (Alpha=.01)
wtmin150<>0	-1.0786	0.29428	Accept H <sub>0</sub>	0.17624	0.056340
wtmin150<0	-1.0786	0.14714	Accept H <sub>0</sub>	0.27272	0.092995
wtmin150>0	-1.0786	0.85285	Accept H <sub>0</sub>	0.00361	0.000429

### Nonparametric Tests Section

#### Quantile (Sign) Test

Hypothesized Value	Quantile	Number Lower	Number Higher	Prob Lower	Prob Higher	Prob Both
0	0.5	11	9	0.74827	0.41190	0.823803

#### Wilcoxon Signed-Rank Test for Difference in Medians

W Sum Ranks	Mean of W	Std Dev of W	Number of Zeros	Number of Ties	Multiplicity Factor			
81	105	26.7768	0	4	24			
Alternative Hypothesis	Exact Probability		Approximation Without Continuity Correction			Approximation With Continuity Correction		
	Prob Level	Decision (5%)	Z-Val	Prob Level	Decision (5%)	Z-Val	Prob Level	Decision (5%)
	Median<>0		0.896	0.370	Accept	0.877	0.380	Accept Ho
	Median<0		-0.896	0.185	Accept	-0.877	0.190	Accept Ho
Median>0		-0.896	0.814	Accept	-0.915	0.819	Accept Ho	

# One-Sample T-Test Report

Page/Date/Tin  
Database  
Variable

2  
C:\PROGRAM FILES\NCSS97\DATA\SAMPLE.S0  
wtmin150

## Plots Section

